

An Integrated Approach for Sustainable Development of Taiwan's Bunun Tribe



財團法人
慈心有機農業發展基金會
Tse-Xin Organic Agriculture Foundation



Nan-An Tribe

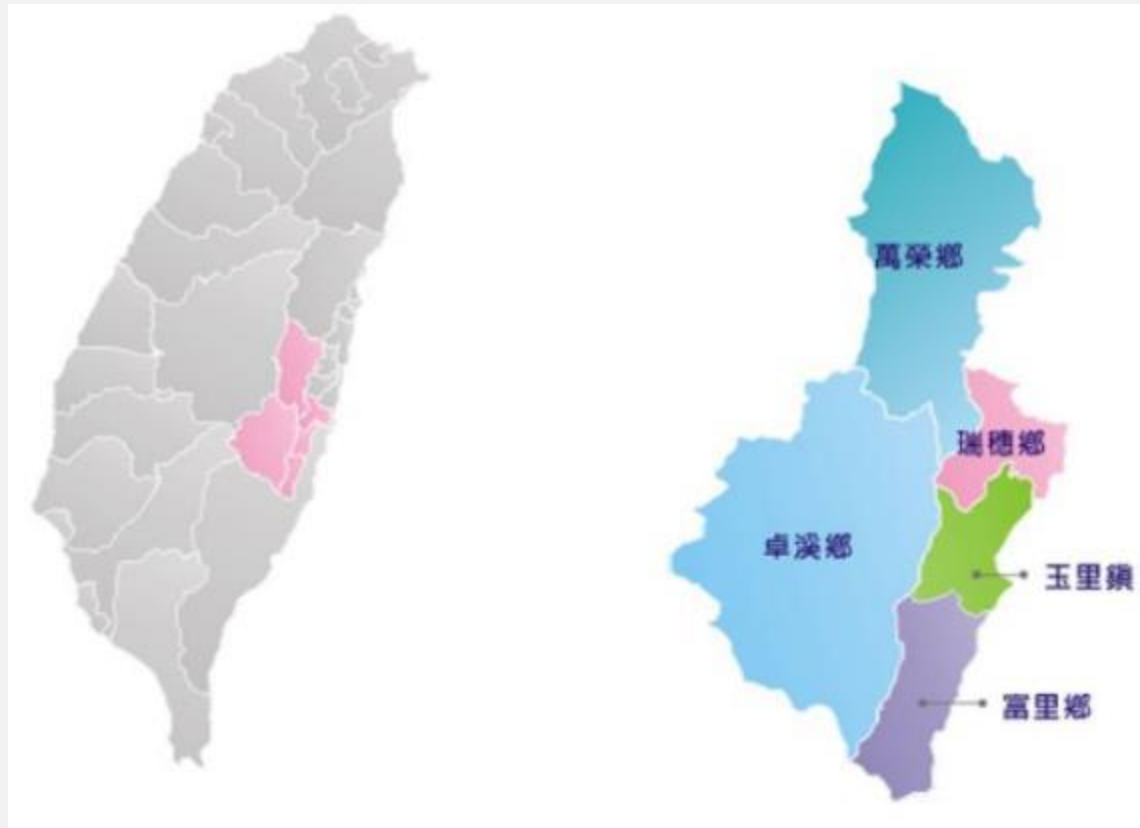




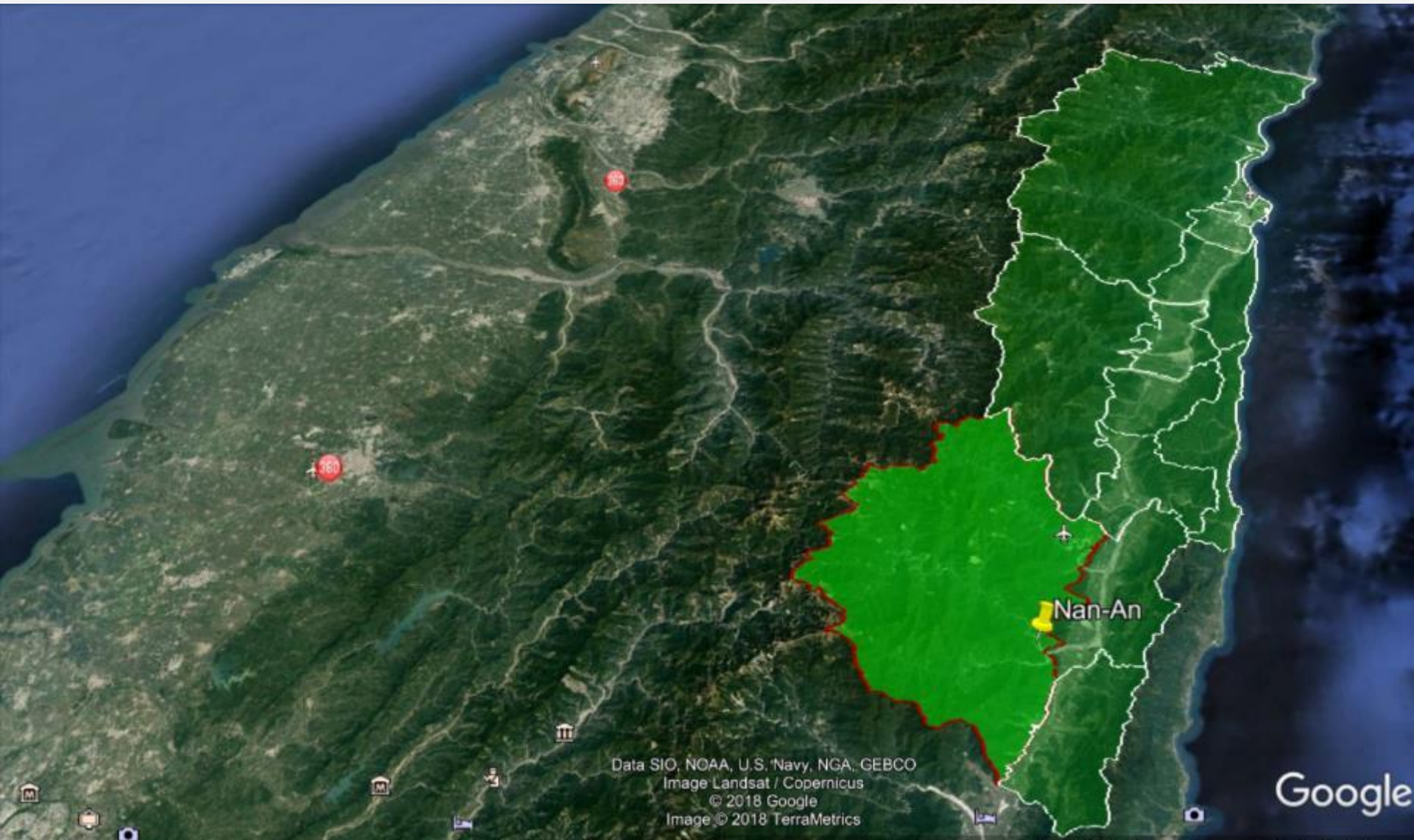
Natural Environment in Nan-An



Location



Location





**Nan-An
Farmland**

The First Organic Farmland
at the foot of Mount Jade

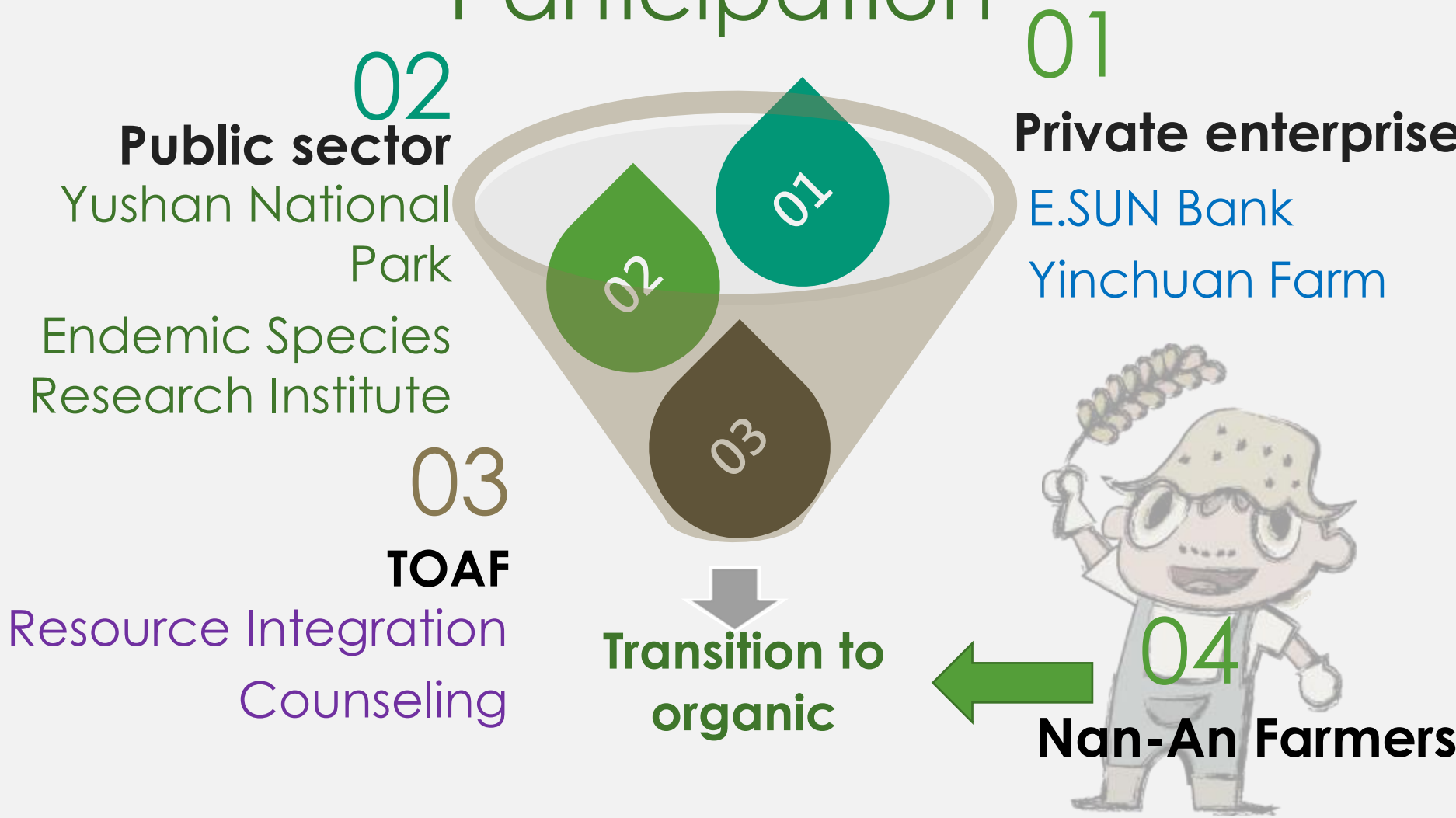


Pesticide Pollution





Multi-Stakeholder Participation





Agricultural Economics

Rice Crop Management/Technical Support/
Multi-Party Collaboration



Communication and Hands-on Learning on the Farm



Testing a Homemade Rice Husk Carbonization Furnace



Ecology and Eco-Friendly, Organic Farming Courses



Investigations of Conventional Farmlands



Ecological Pest Management Interaction





Ecological Preservation

Diverse Ecosystem / Moltrecht's Minnow



A Case Study : Moltrecht's Minnow



Waterways on Farms Fish Survey Moltrecht's Minnow



Nan-An Ecological Pool Exploration and Planning



Ecological Pool made by Nan-An Farmers and Children



Young Observers in Nan-An





Tribal Culture and Brand

Co-Management Systems/Bunon Beans/
Multi-Level Marketing of Malawi



Malawi Working Team Development and Discussion



External Marketing of Nan-An Organic Rice



Bunon Beans Observation in Family Vegetable Garden



Cultural Conservation Farmland for Bunon Beans



Traditional Rice Cultivation Interaction



Multi-Organic

Economy

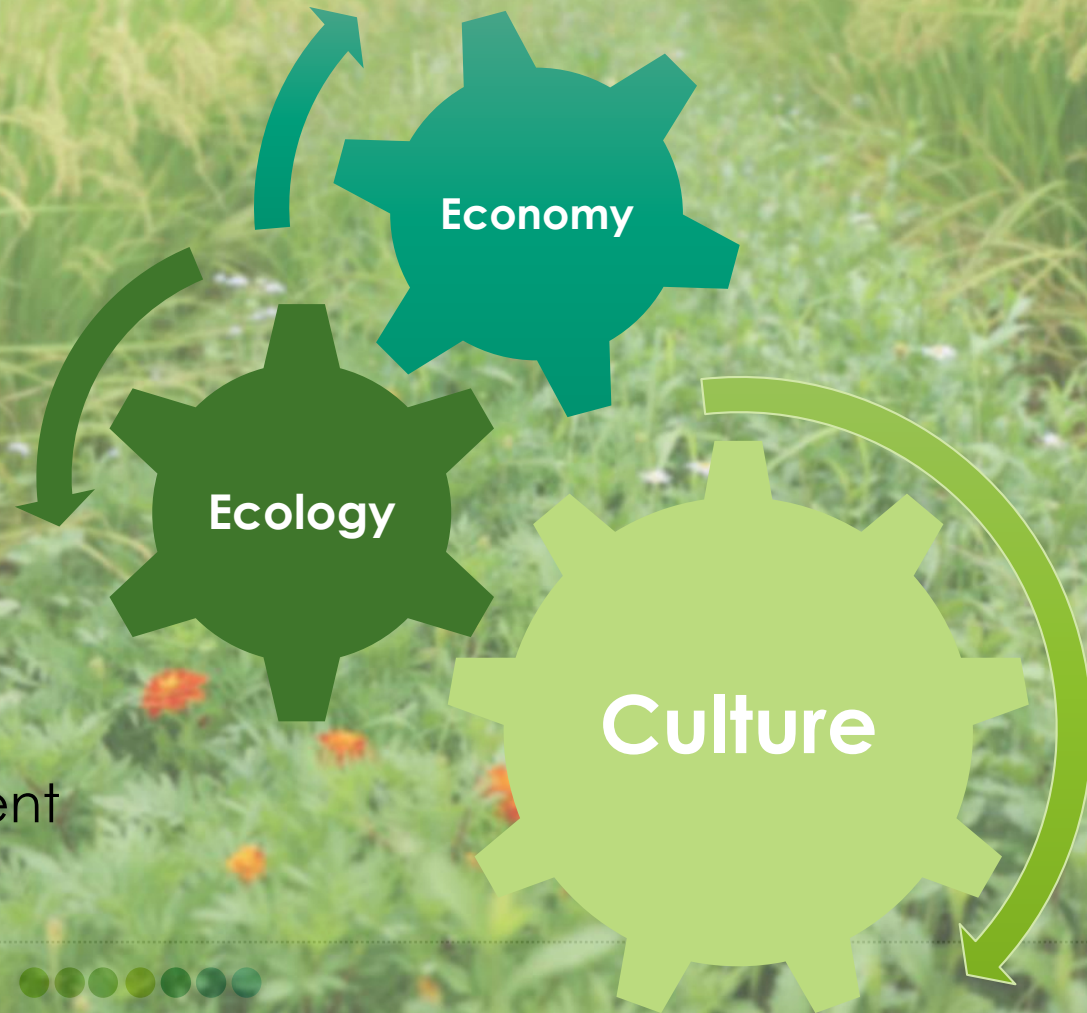
Organic Management
Organic Area

Ecology

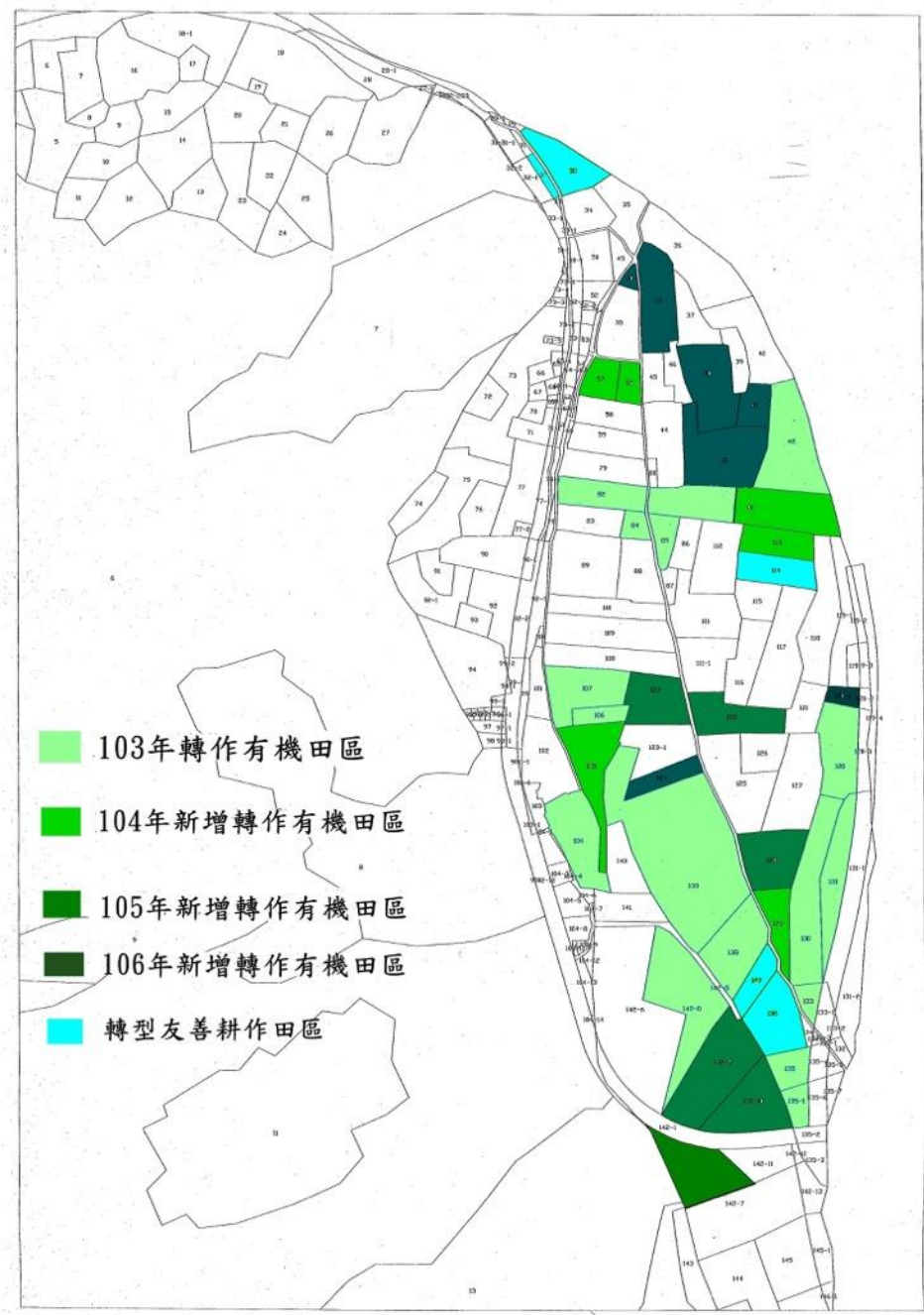
Eco-friendly Agriculture
Environmental Education
Ecological Sustainability

Culture

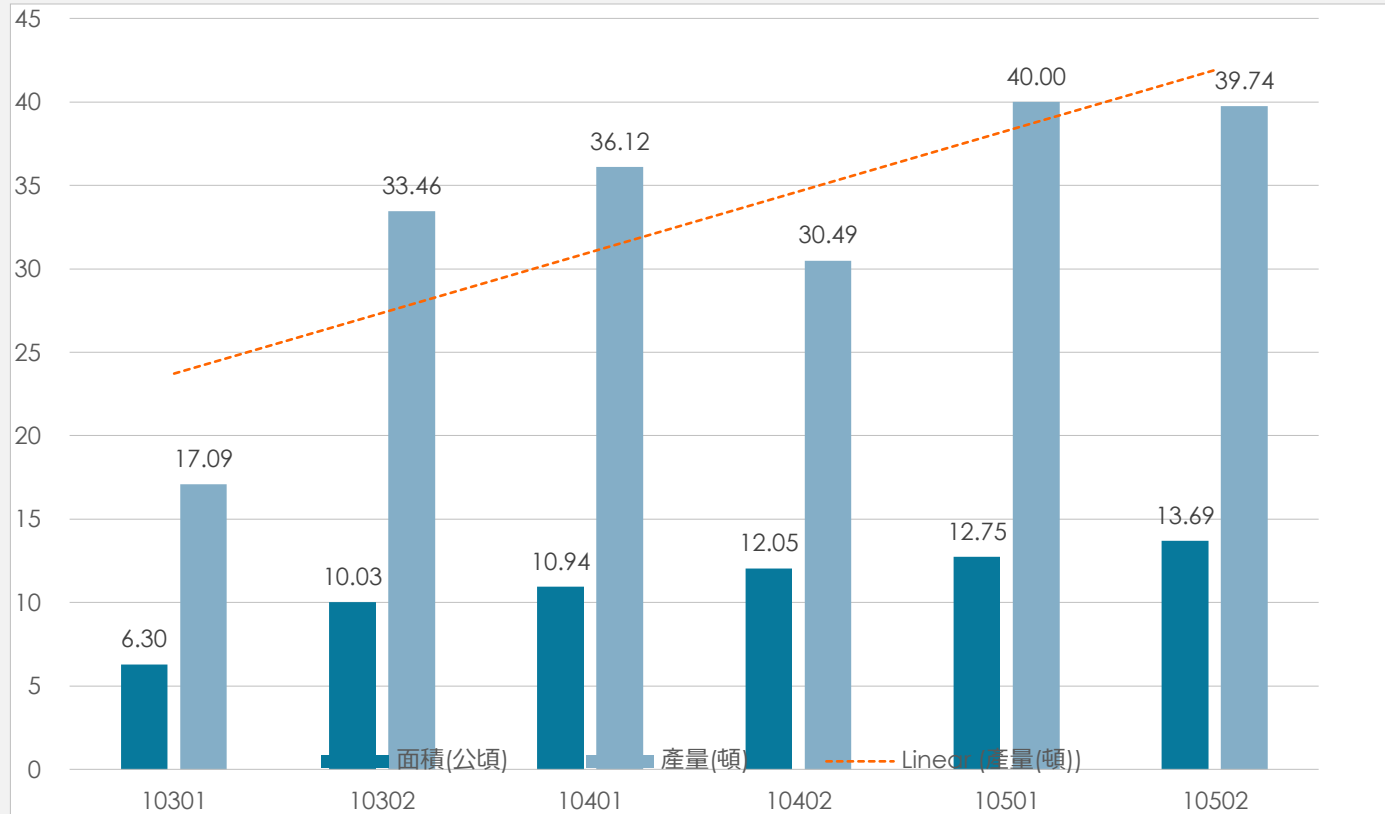
Tribal Consensus
Cultural Practices
Independent Development



Growth of Organic Farmland in Nan-An



Organic Area and Outputs



Viewpoint and Benefit

- 
- **Ecological understanding of organic farmland**

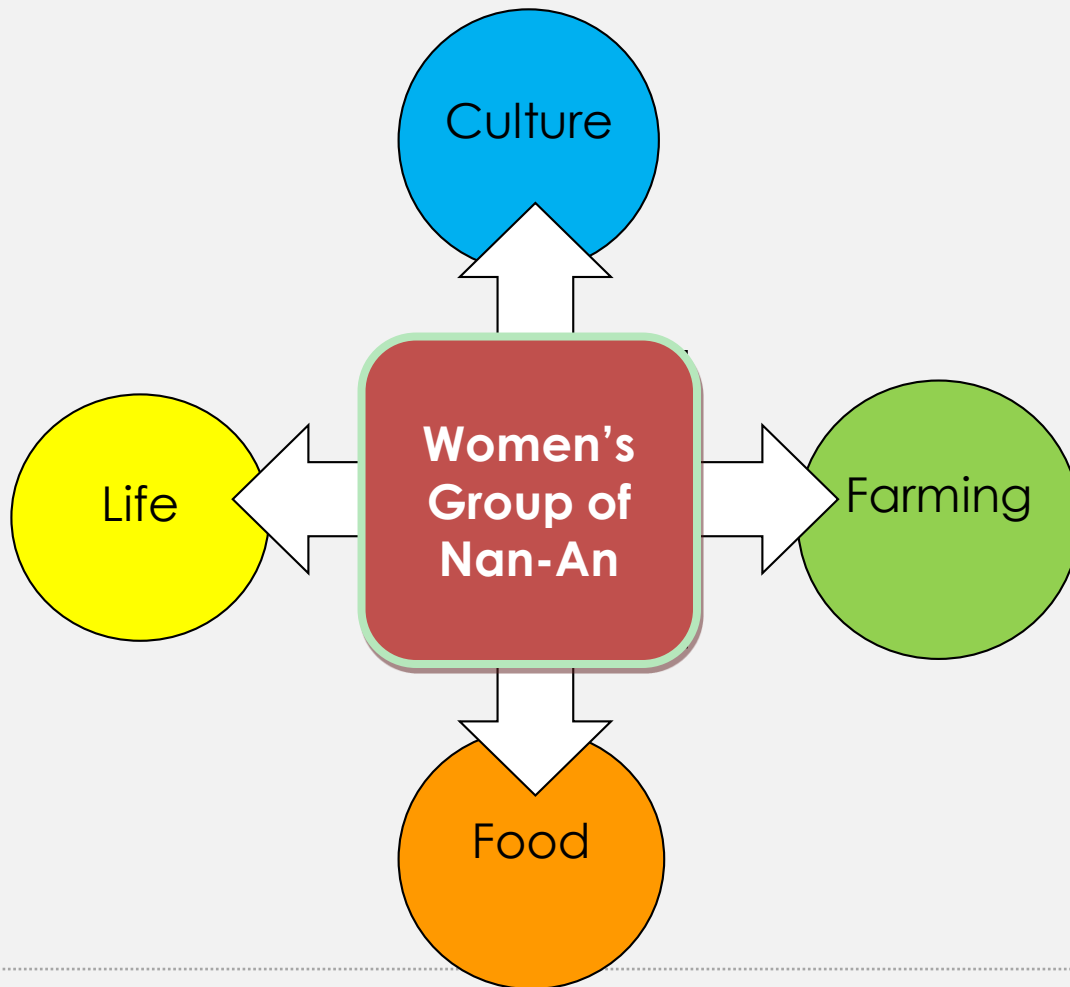
- 
- The culture and organization of local brand

- 
- The PGS concept of the Green Conservation Program

- 
- Continuous support to and lifelong learning for local farmers



Gender and Daily Life in Nan-An



Traditional Rice Cultivation



Viewpoint and Benefit

- 
- Ecological understanding of organic farmland

- 
- **The culture and organization of local brand**

- 
- The PGS concept of the Green Conversation Program

- 
- Continuous support to and lifelong learning for local farmers



Solidarity of Malawi

Brand Building

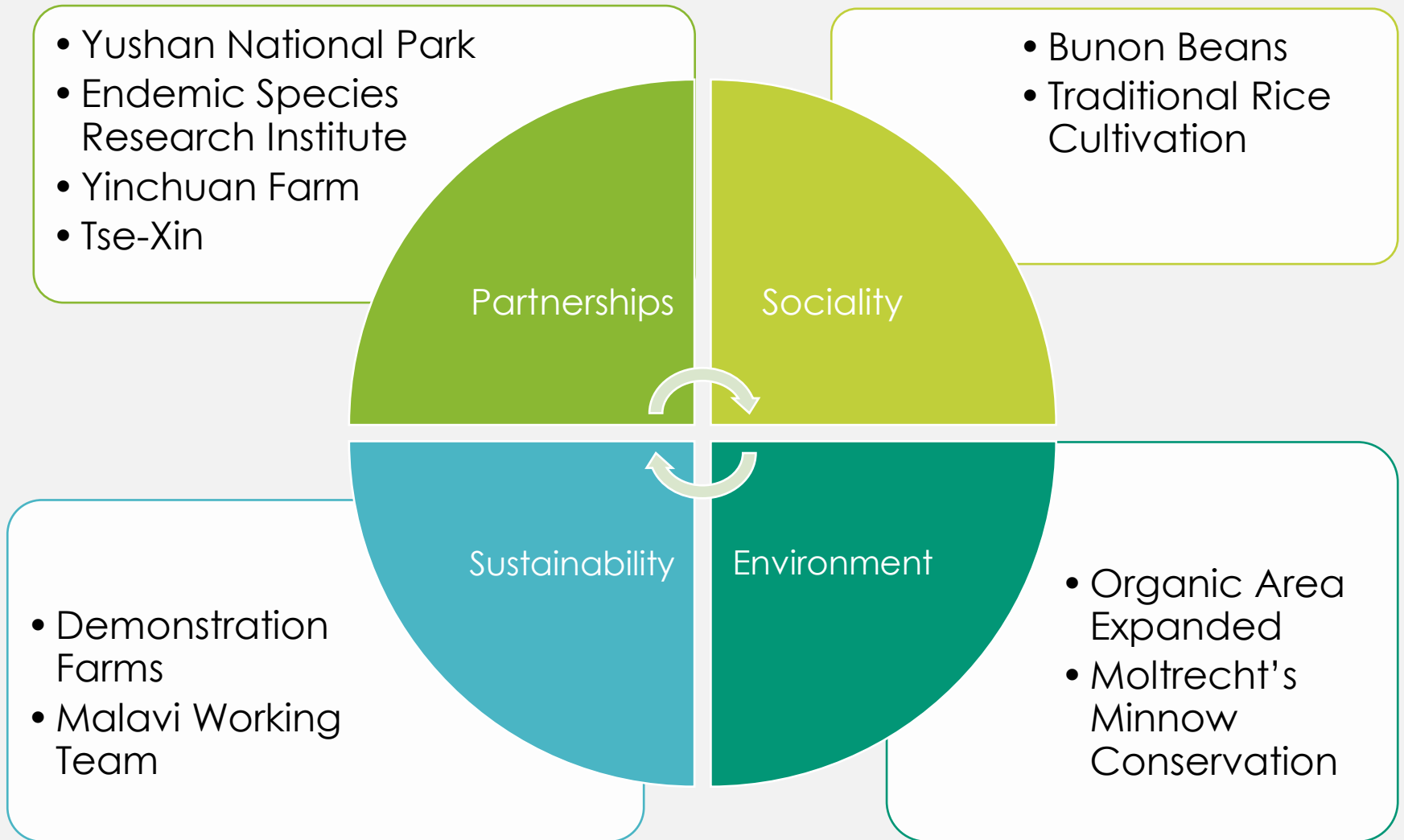
Empowerment

Research &
Development,
Marketing

Local
Communication



Concentric Circles of Malawi



Viewpoint and Benefit

- 
- Ecological understanding of organic farmland

- 
- The culture and organization of local brand

- 
- **The PGS concept of the Green Conservation Program**

- 
- Continuous support to and lifelong learning for local farmers



Conservation Actions: Moltrecht's Minnow

Ecological pool
Habitat
Creation


Green
Conservation
Program

Life history
study

Endemic
Species
Research
Institute



Ecological and environmental education



Viewpoint and Benefit

- 
- Ecological understanding of organic farmland

- 
- The culture and organization of local brand

- 
- The PGS concept of the Green Conversation Program

- 
- **Continuous companionship and learning with local farmers**



Malawi with us

