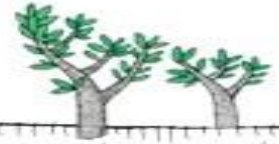


함께 살리는 생명밥상, 생명농업, 생명세상

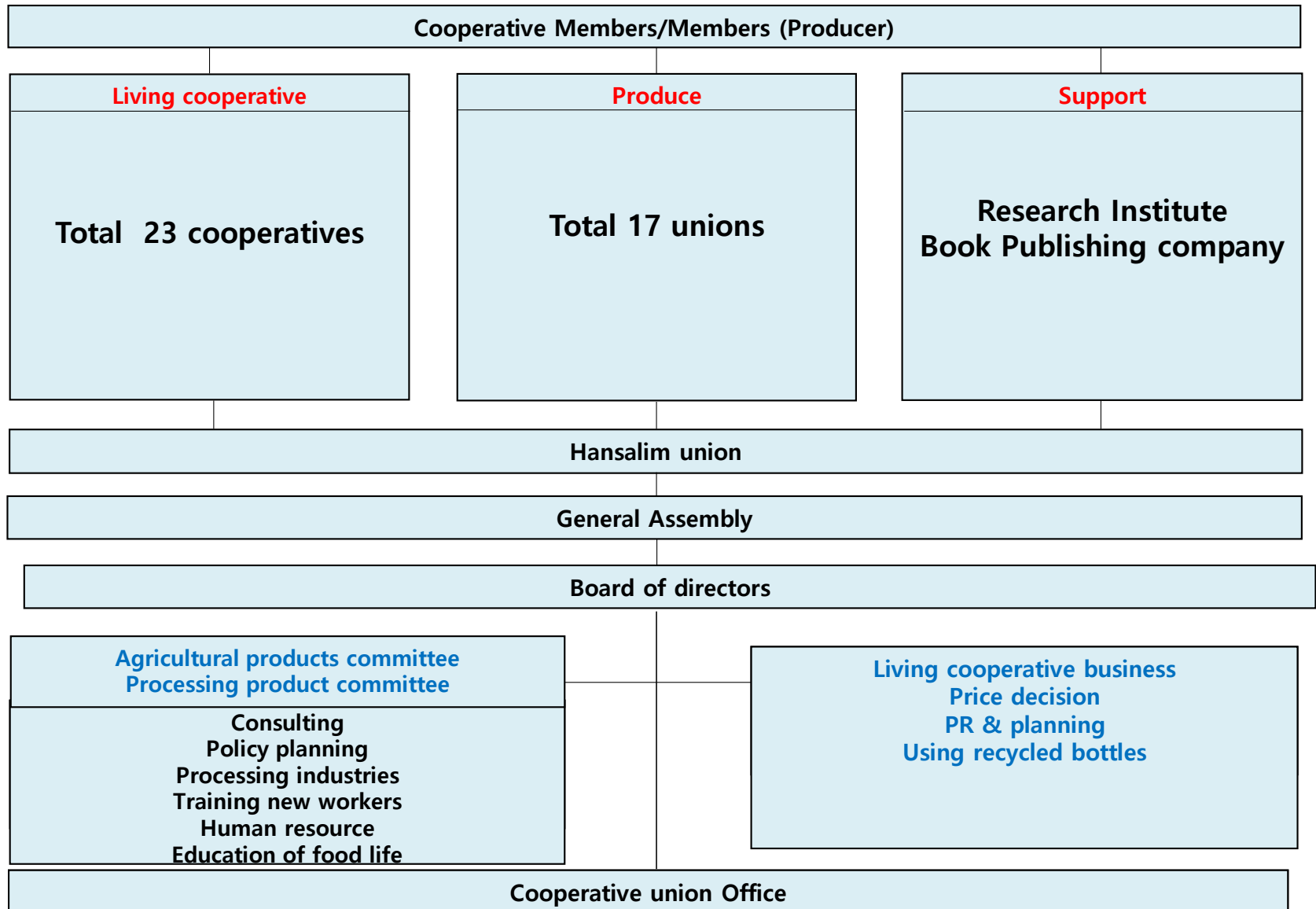


한살림

Hansalim Cooperative union



Hansalim Cooperative union organization



Increases of Hansalim Cooperative Member

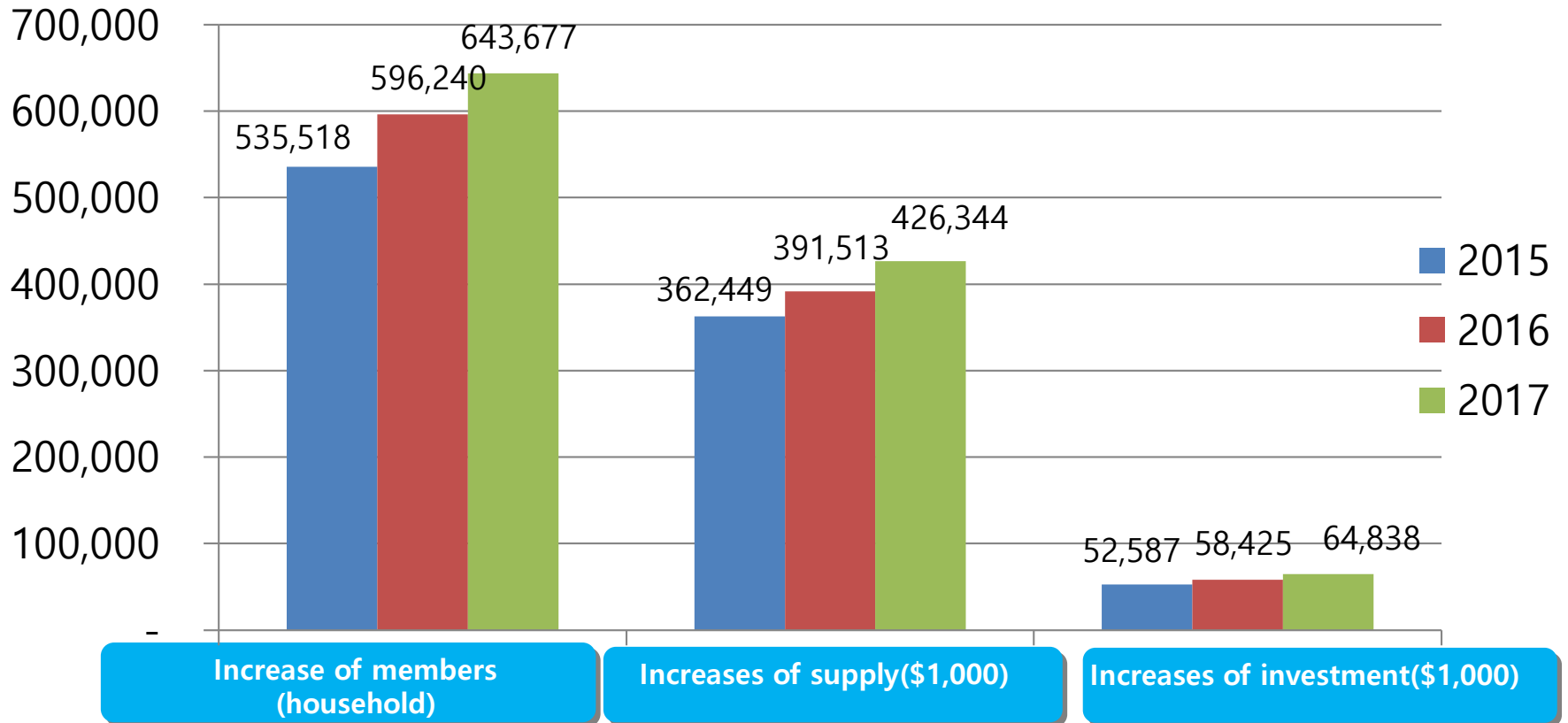
(Unit : household, thousand won)

Sorting	Number of members		Amount of supply		Amount of investment	
2000	31,511	(18.6)	18,475,050	(22.8)	1,938,234	
2001	41,031	(30.2)	27,189,800	(47.2)	2,401,525	(23.9)
2002	60,363	(47.1)	37,822,556	(39.1)	3,453,157	(43.8)
2003	76,536	(26.2)	49,482,247	(30.8)	4,785,106	(38.6)
2004	99,761	(30.3)	70,201,734	(41.9)	7,286,258	(52.3)
2005	115,851	(16.1)	80,932,609	(15.3)	9,513,968	(30.6)
2006	132,787	(14.6)	93,592,257	(15.6)	11,787,539	(23.9)
2007	147,339	(10.9)	108,954,457	(16.4)	13,989,965	(18.6)
2008	170,793	(16.0)	132,597,624	(21.7)	16,531,314	(18.2)
2009	207,053	(21.2)	158,759,266	(19.7)	20,685,387	(25.1)
2010	247,072	(19.3)	186,241,576	(17.3)	24,551,669	(18.6)
2011	293,442	(18.8)	222,581,351	(19.5)	29,217,131	(19.0)
2012	346,500	(18.4)	253,388,130	(13.8)	34,156,706	(16.9)
2013	410,211	(18.4)	304,452,202	(20.2)	40,192,779	(17.7)
2014	481,105	(17.3)	343,690,105	(12.9)	46,680,071	(16.1)
2015	535,518	(11.3)	362,449,771	(5.5)	52,587,745	(12.7)
2016	596,240	(11.3)	391,513,506	(8.0)	58,425,614	(11.1)
2017	643,677	(7.9)	423,344,847	(8.1)	64,838,444	(11.0)

Main business

Number of members/Amount of supply/Increases of investment

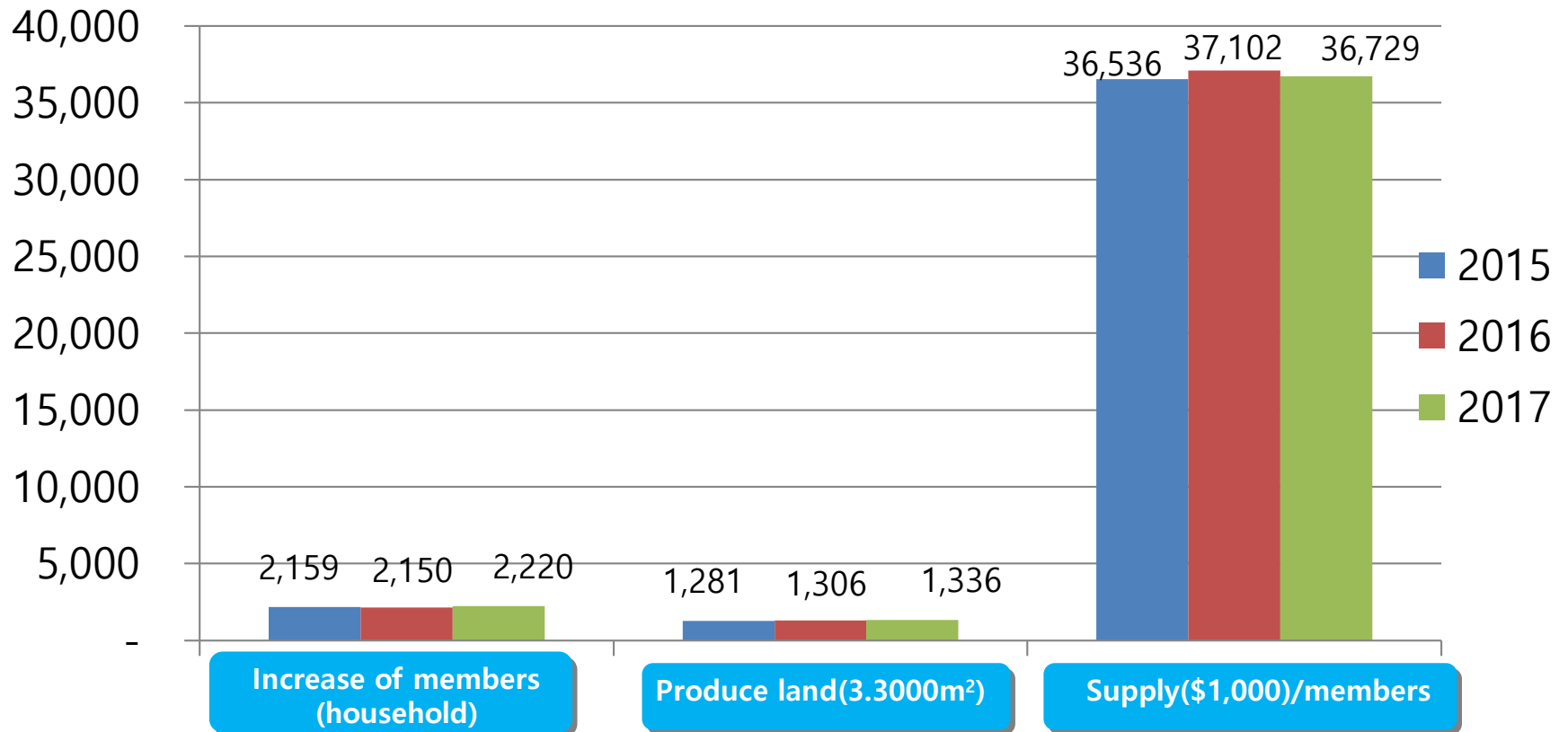
643,677 households participated in 2017. And foods composed of \$426 million



Main business

Producer/Produce area/Increase of consignment

2,220 producing farm households participated in 2017. 44,165m² farm lands, 81 million dollars of agricultural supply in 2017.



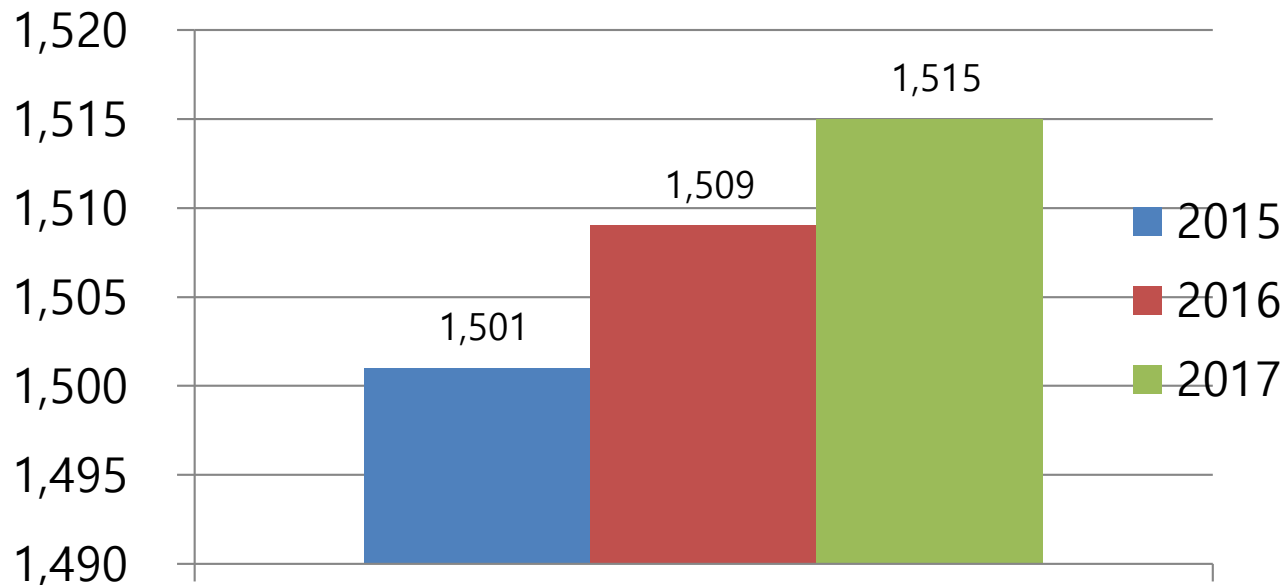
Main business' Report

Local Foods Movement

We reduced 1,515 tons of CO², participating in "Local Foods Movement" in 2017.

"Same effect as planting 303,000 pine trees"

<Amount of CO² decrease according to "Local foods movement" (ton)>



Main business

Using recycle bottle and decrease of CO²

We reduced 95.6 tons of CO₂, participating in "Using recycled bottles movement" in 2015.

"Same effect as planting 19,128 pine trees"

<Re-using bottles and effect of CO² decreasing>

Category		2015	2016	2017
Using recycle bottle and decrease of CO ₂	Supply	1,265,072	1,218,925	1,181,901
	Amount of recovery	252,485	280,945	319,053
	Ration of recovery/year(%)	20.0	23.0	27.0
	Emission of CO ₂ /bottle(g) b	300	300	300
	Decrease of CO ₂ (ton) a×b	75.7	84.2	95.6

Amount of supply / Environmentfriendly Agricultural Products Certification System

The end of 2017 / measure : ton

Sort	organic	pesticide-free	Pesticide-low	national	Total
staple grains	4,617	385			5,067
other grains	515	488		260	1,263
root and tuber crop	1,262	126			1,388
plants	7,475	2,460	546	48	10,529
Fruits	1,337	608	2,298	55	4,298
Total	15,206	4,067	2,844	363	22,480

Daily action to save Life and Earth

HANSALIM



INTRODUCTION

Hansalim is a Cooperative established by the producers and the consumers. The producers farm and produce products believing human and nature as well as the urban and the rural area is connected with the string of life. And the consumers use the products understanding the mind of



WHAT WE DO



Save our Table



Save our Agriculture



Save our life and earth

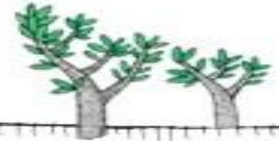


ANNUAL REPORT

- ▶ 2018 Hansalim Story
- ▶ 2016 Hansalim Story
- ▶ Anseong Distribution Center has Built
- ▶ 2013 AsiO Gusto
- ▶ Save Korean Barely Pork

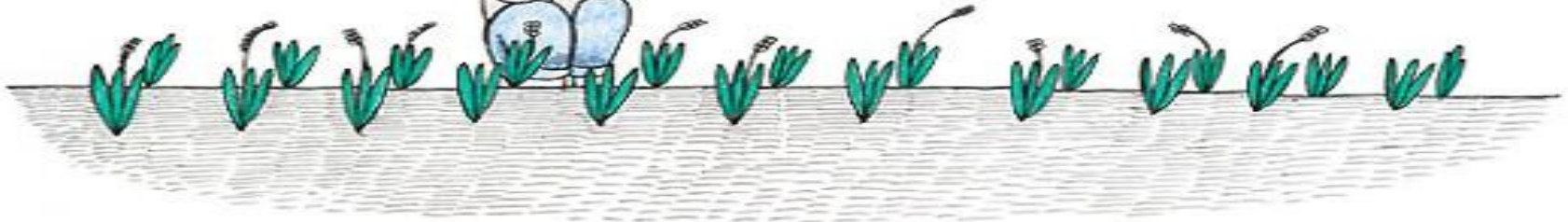
[read more](#)

함께 살리는 생명밥상, 생명농업, 생명세상

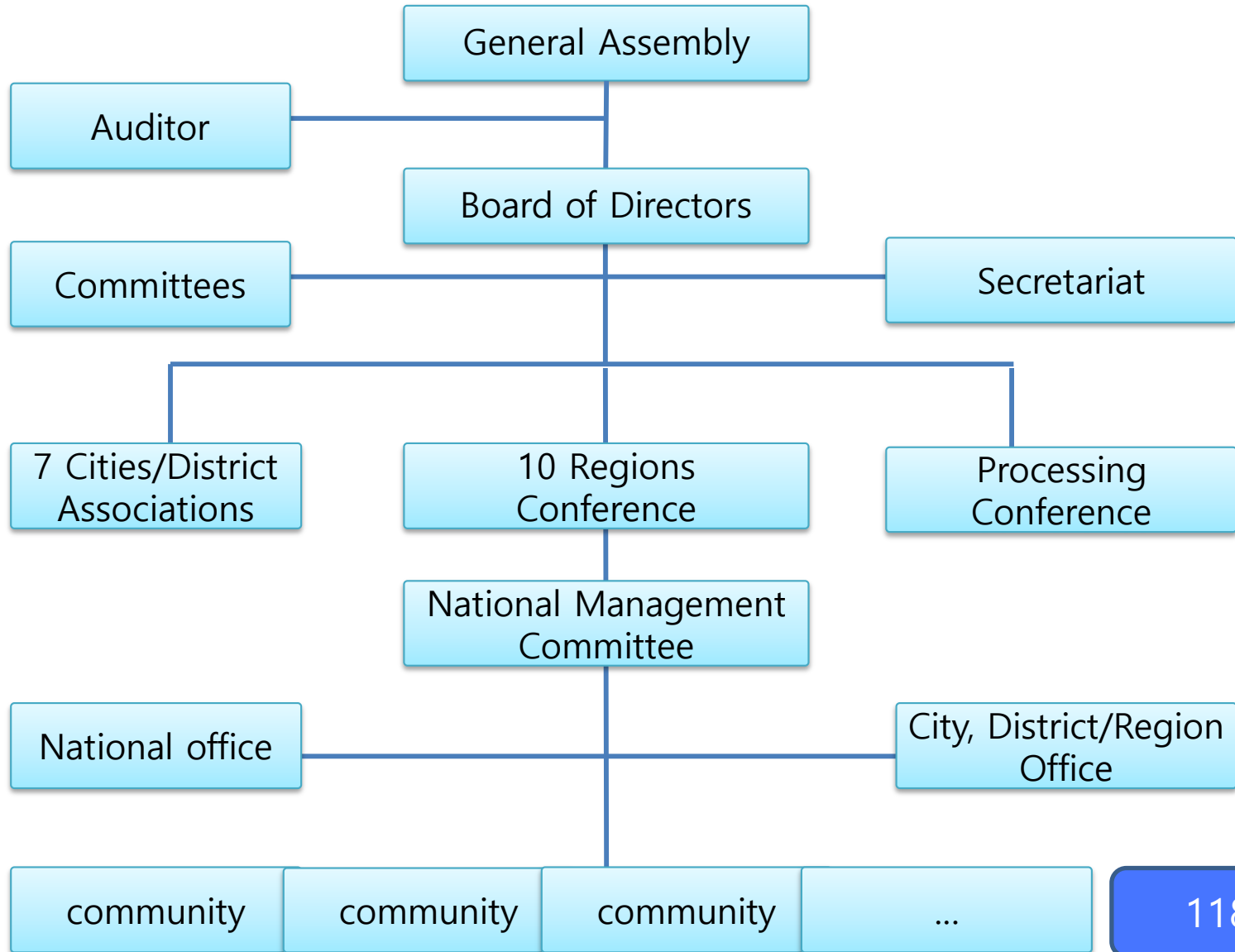


한살림생산자연합회

Hansalim Producer Cooperative union



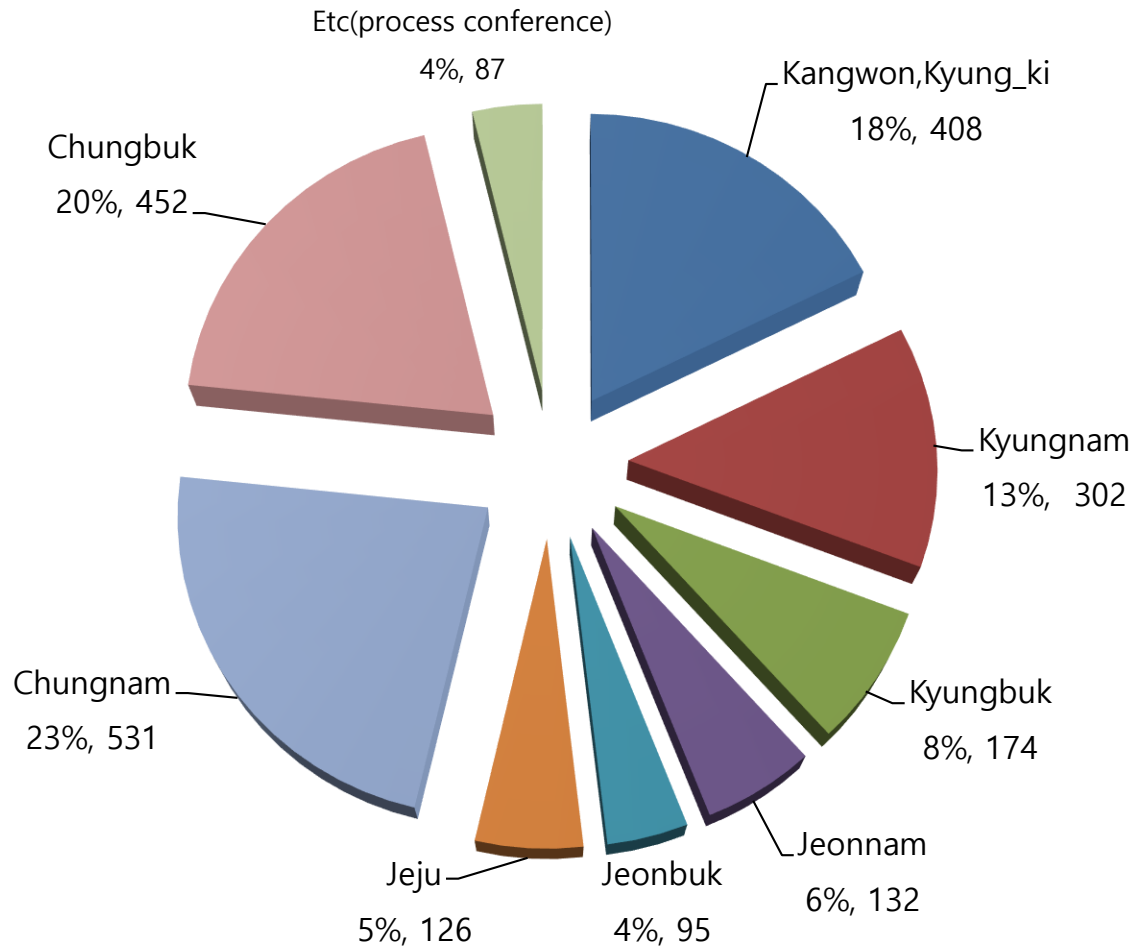
Organization



Members (2017.12)

2,220 household

Ration of members by province



Organic Cultivation+ Organic stockbreeding

Environment friendly agriculture with Resources Circulation

PRUNDLE
Agricultural Corporation

Process of Asan environment-friendly agriculture producer's organization establishment

Step of organization establishment

1975~
1986

- '75 : - Start to organic agriculture (Institute of agriculture skill)
- '79 : - YMCA(Umbong Church), grains union
- '80 : - Start to direct rice business by grains union
- '82 : - Founded agricultural corporation

- '86 : - Stop to direct business and dissolution of organization (Because of managing difficulties, dept increasing, drop of cow price)

- Inner organization come out based on the peasant movement & Live movement but they could not constitute the producer organization because of economic failure
- Farmers who are left in the area, are encouraged to build up trust each others through combination of success and failure

Process of Asan environment-friendly agriculture producer's organization establishment

Step of connection to Outer Organization

1987~
1999

- '87 : - Establish of Hanmaum community
(Start to Hansalim movement)
- '94 : - Make a U.R negotiation
(Making crop group)
(New changes of peasant movement)
- '96 : -Founded of Asan Hansalim producer union
(4 organizations-30 people are participated)
- '97 : - There were some different opinions
regarding strategy of distribution channel
- '99 : - Start to discuss strategy of developing
rural agriculture

- **After U.R negotiation, it is the period of change of peasant movement.
The period from alliance with Hansalim till encouraging network with local community
since starting local agriculture in 2000.**

Process of Asan environment-friendly agriculture producer's organization establishment

The step of Extensional expansion 2000~2010

- Build up rural agriculture
- Build up environment friendly agriculture producing and processing system
- Establish and vitalize the cluster foundation
- Organic cultivation + Organic stockbreeding + Processing

- in 2000 : - The day of the local agriculture declaration
- Found the Purundel agricultural corporation
- in 2003: - Establish the food processing factory by Purundel agricultural corporation
- in 2005 : - Select to business of resources circulation cluster in Asan
- in 2006 : - Start construction of environment friendly support center
- Attain the ISO9001/ISO14001/HACCP certification (Business of cluster support)
- Start school meals service in Asan
- in 2007 : - Completion of environment friendly support center
- (incorporated company) Establish Purundel stockbreeding company[feed stuff]
- in 2008 : - Start to organic stockbreeding(calf)
- (corporation)Establish Purundel food [meat processing]
- Selected as "farm distribution organization" [Ministry of Agriculture and Forestry]
- in 2009 : - First supply the organic Korean beef
- in 2010 : - Completion the direct managing farm (Foundation of community)

Process of Asan environment-friendly agriculture producer's organization establishment

Planning the 2nd development plan about environment-friendly local agriculture and accomplishment the local food(consumer) system

- in 2011 : -Discuss public meal service
(Connection to Chung-nam environment friendly agriculture organization)
- in 2012 : - Discuss local organization and social enterprise which covers local food and agriculture
 - Discuss establishment of the foundation
 - Making the dry system using burned rice husks (Reduction of energy/ reduction of CO² emission)
- in 2014 : -extend a building the food processing factory by Prundle agricultural corporation
- in 2015 : Prundle begin construct food factory
- in 2016 : Prundle completed of construction food factory
- in 2017 : Prundle extended a cold warehouse for raw material storage

□ According to change the agricultural environment, they need to make a farming & rural society which can grow consistently

→ Hence, we need to make up a general organization which can provide alternative on current agriculture and rural society

Required of rural agriculture

- Starting to action and spread of ecological agriculture in rural community, fulfill the organic circular community system and establish the rural community and ecological life style
- Make a long-term substance circular system, specialize the community using their circumstance, strengthen the combination of direct business and exchange with consumers, and make the cooperative business with relevant organization in community

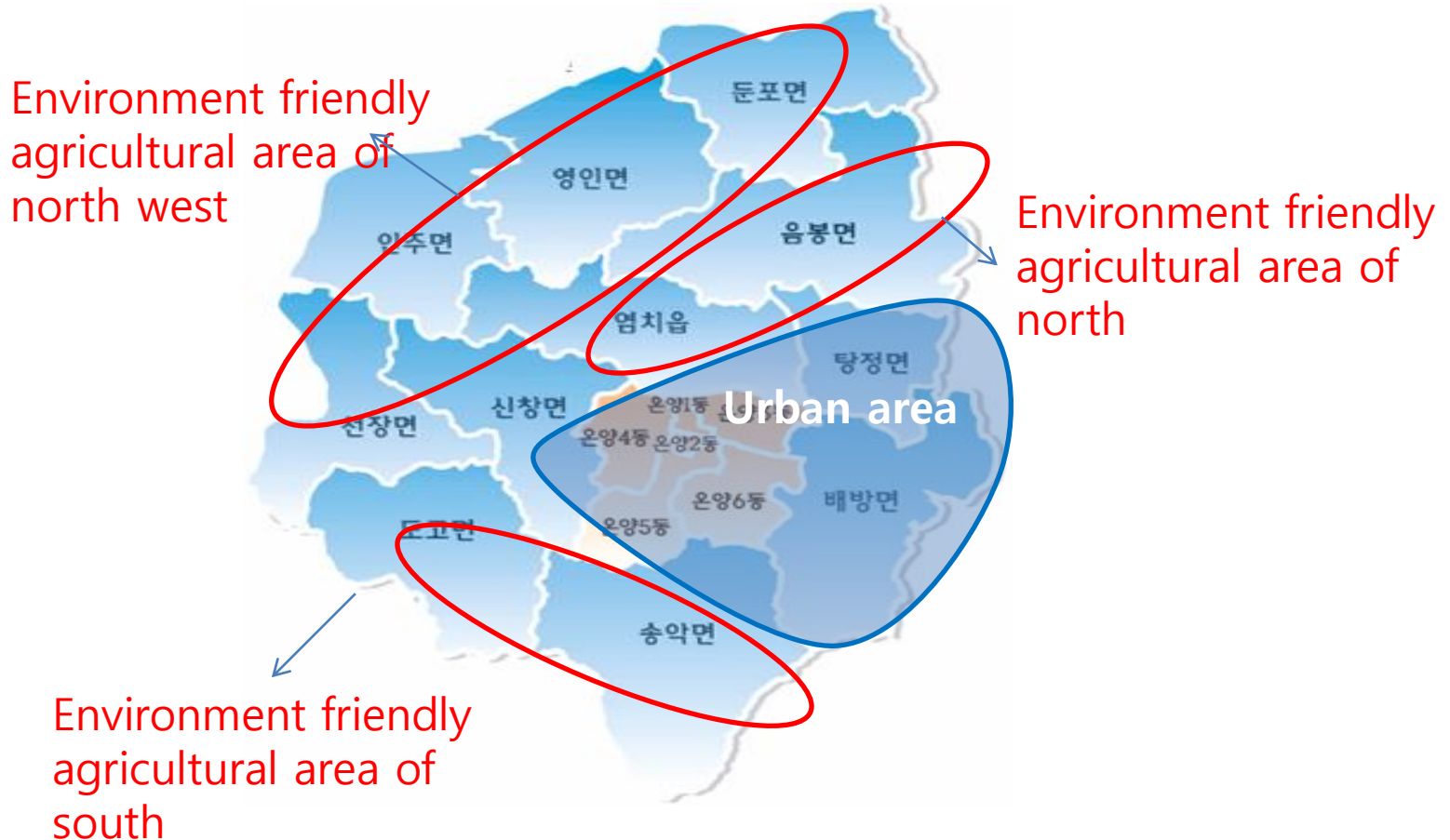
Basic plan of rural agriculture

- ▣ Maximize resources in rural district and minimize resources from outer
- ▣ Making the substance circulation system in rural district.
- ▣ Specialize the rural district using organic vegetable and rice.
- ▣ District producer leads the business as a leader.
- ▣ Establish the rural agriculture with producer, consumer, local government and agriculture association.
- ▣ Arising the value added according to maximize the processing produce of first production.

Start to agriculture in Asan(January 21st, 2000)



Re arrangement of producing area according to change of local structure



Asan Union

- Most important organization in environment friendly agricultural industries: Producing plan, managing, making policies for their members

prundle agricultural corporation

- Distribution, processing organization for planned farming producing by producer of Asan union

Asan environment-friendly local agricultural cluster

- Organization for having network with local producer, professor and researcher

Hansalim Chunan Asan living cooperative

- Role of encouraging the consumer organization which can sell producer union's products.

**Hansalim
Chunan asan
living
cooperative**

**Hansalim Asan
producer union**

**Purundel
farming**

Role of encouraging the consumer organization which can sell producer union's product

Overall decision of policies, producing plan, organization management

They help farmers to focus only on produce through undertaking the all processing and distribution of agricultural products

Prundle stock breeding(feed stuff)



Handle food- meat processing



Food business

Bean sprouts

School meals service

Processing

Farming company

RPC(rice processing center)

Lab of corporation

Distribution

Organic stockbreeding direct farm

Education center

Tuition for member's child of producer consumer member

Support to produce(loss/encouragement/facility)

Support to tuition of study abroad

Training of international student/education

Sponsor to develop specialist

Sponsor of the Anglican Church of Korea

Sponsor of multicultural family center

Sponsor of child welfare center

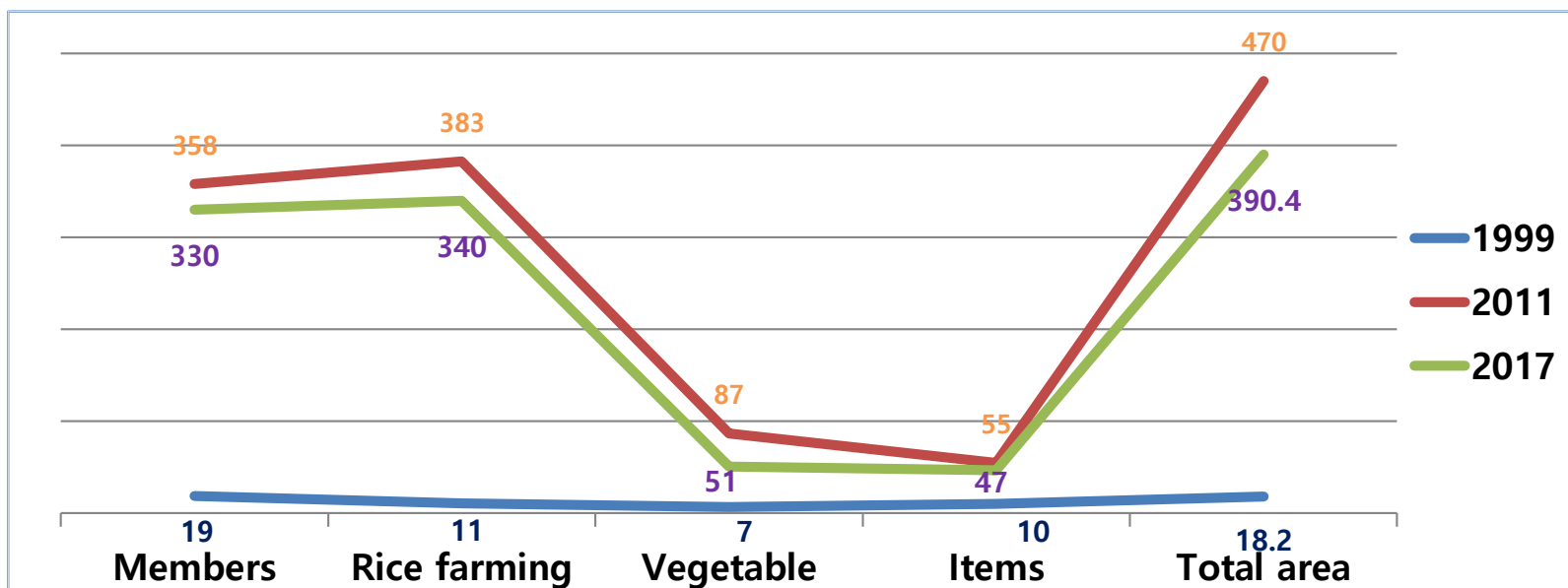
Sponsor of social enterprise

Sponsor of goods for Asan welfare center

Sponsor of other agricultural organizations

Enlargement of environment friendly agriculture members and field area

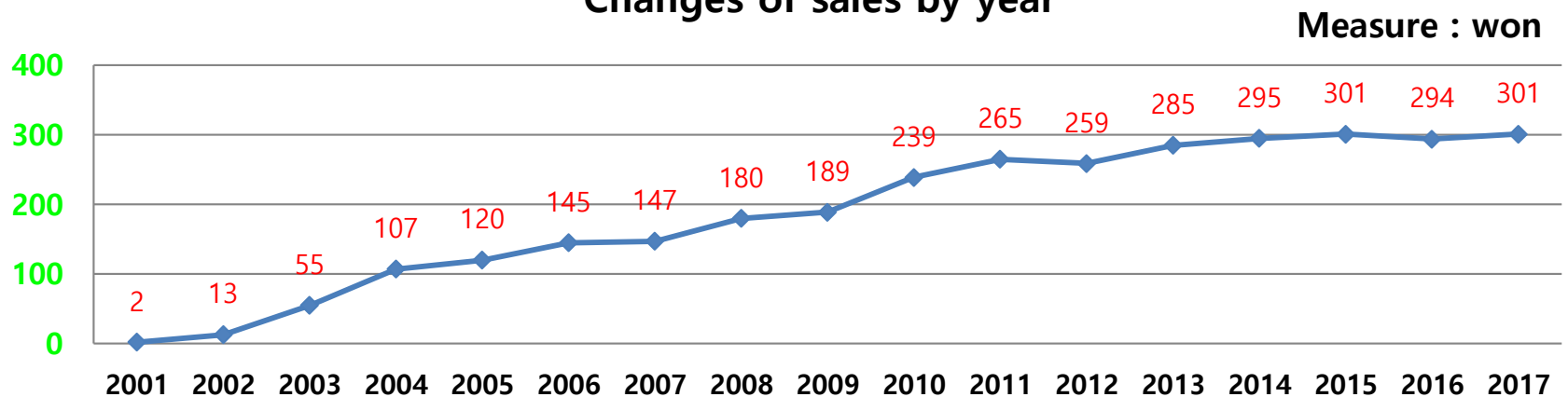
Year	No.of members	Area(ha)		Items	Total area (ha)
		Rice farming	Vegetable		
1999	19 people	11.0	7	10items	18.2
2011	358	383	87	55items	470
2017	330	340	51	47items	390.4
A Percentage change	1636%	2990%	628%	370%	2045%



Quantity growth of environment friendly agriculture

Category	2017	resources
No. of producing item	47 items	rice, vegetable, processing food
No. of business	15	Food processing, school meals rice milling, feed stuff
No. of members	50 people	Regular members, foreigner internship
Total fund	\$ 7.2 million	Member's investment
Total sales in 2017	\$ 26.5 million	Dec. 2017 present

Changes of sales by year



Appearance of Agricultural corporation concerning environment friendly agriculture

Category

Type

Produce report

Prundle
Stockbreeding enterprise

Agricultural
corporation ltd.

Produce organic feed stuff

Handle Fppd

Agricultural
corporation

Produce meat processing food

Prundle stockbreeding enterprise -Feed stuff

- ▷ Date of foundation : Sep.11 in 2007
- ▷ Factory : Chung-nam Asan Songak-ro 430
- ▷ Ground area : 8,562m²
- ▷ Total fund : \$ 1.5 million
- ▷ Amount of sales in 2017 : \$ 2.1 million

Handle Food- meat processing food

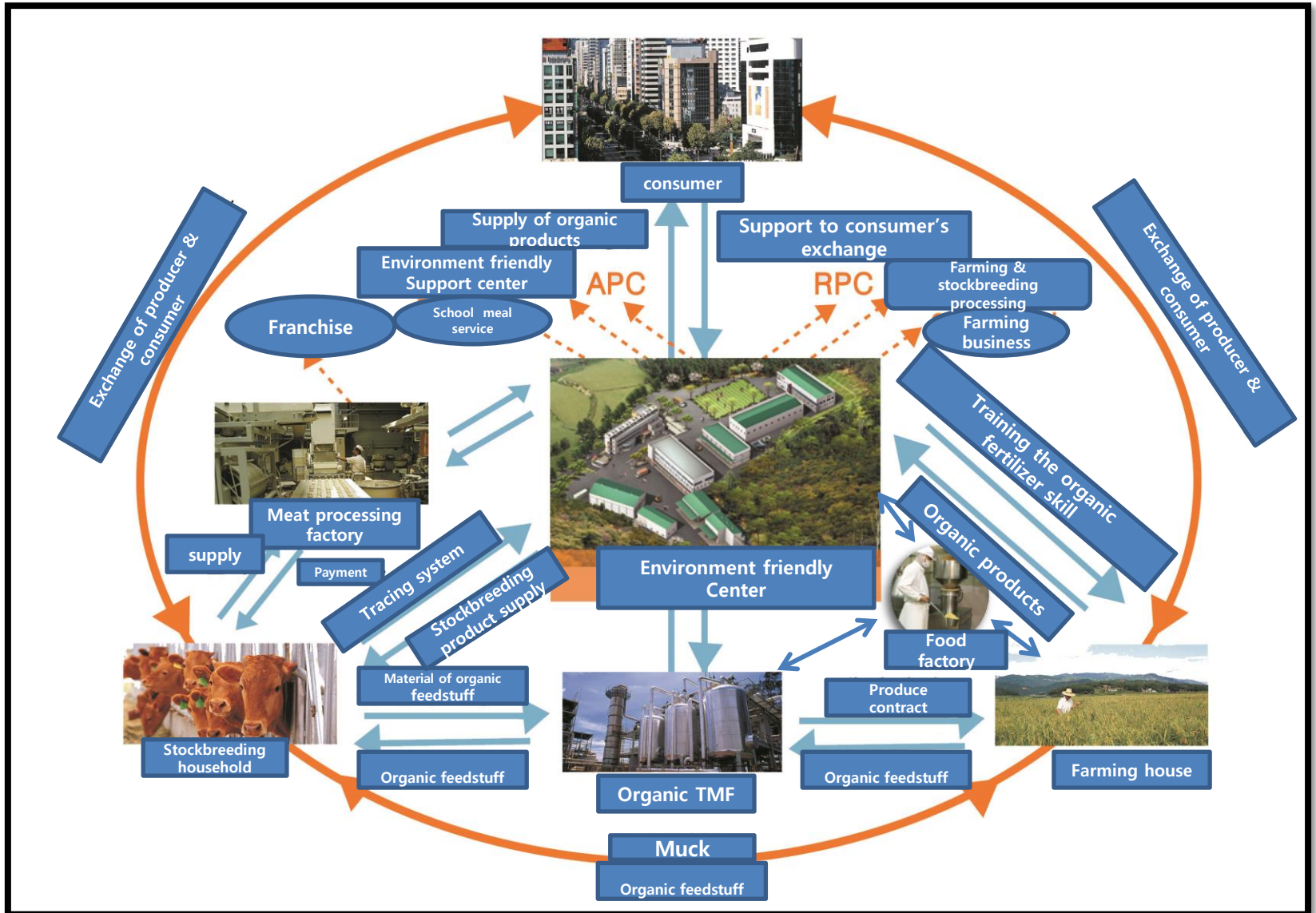
- ▷ Date of foundation : May in 2008
- ▷ Factory : Chung-nam asan Eumbong-myeon
wonnamri 222-1
- ▷ Ground area : 2574.8m²
- ▷ Amount of butchery : 40/month
- ▷ Total fund : \$ 1.3 million
- ▷ Amount of sales in 2017 : \$ 6.2 million

Enlargement of processing product industry concerning environment friendly agriculture (Pear extract, onion extract, tofu/soymilk)

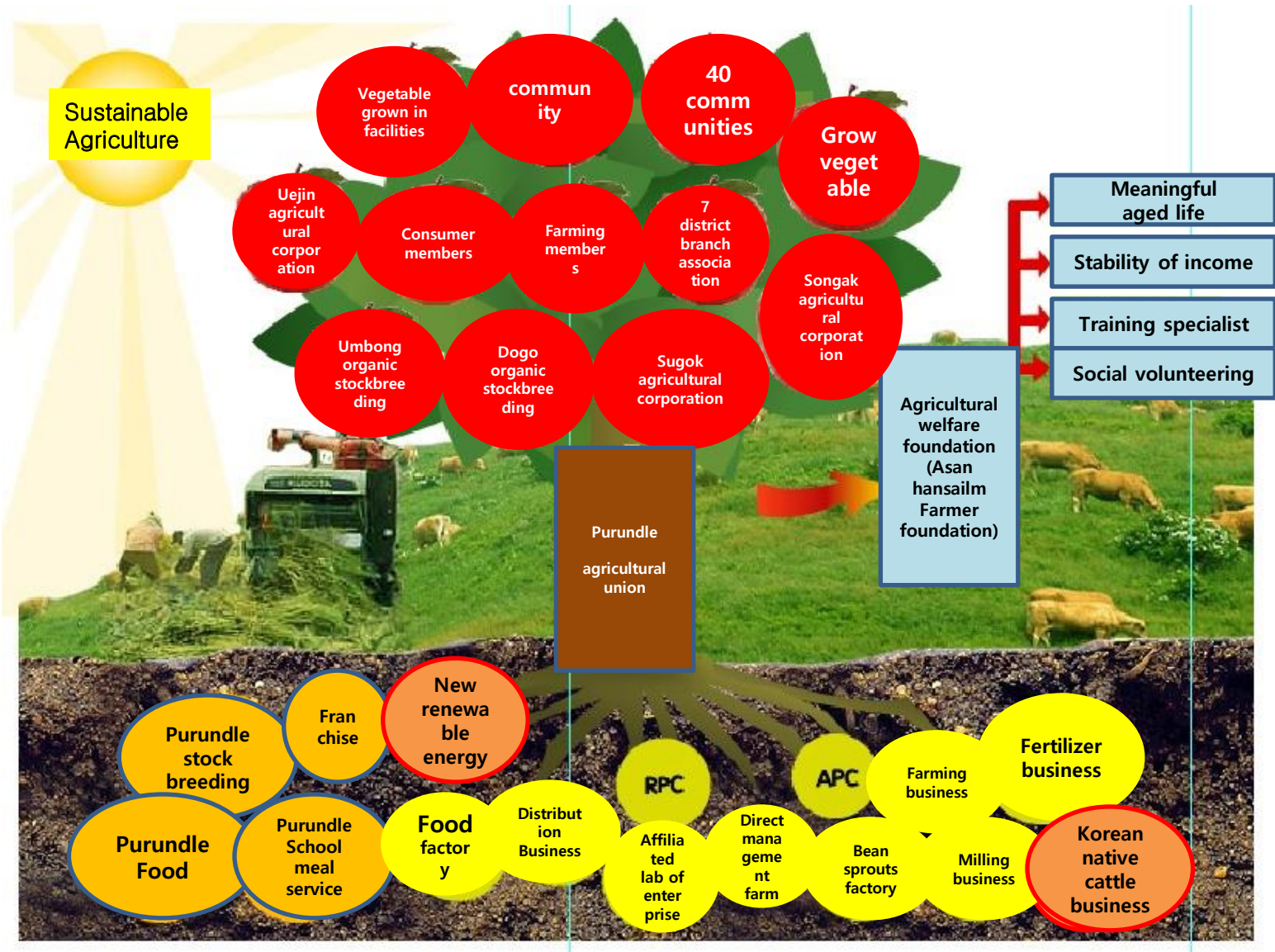



Category	Present condition	Remarks
Producing items	Tofu, soymilk etc	Supply to Hansalim, school meals
Number of staff	20 people	Regular staff, foreigner internship
Total sales in 2017	\$ 6.0 million	Present Dec. 2017

Environment friendly circular agricultural model



Medium long term vision of Asan environment friendly agriculture”





감사합니다
Thank you